

SWAN 38 SLOOP 1977



Specification

JACOBITE

SWAN 38 SLOOP 1977

Designer	Sparkman & Stephens	Length waterline	28 ft 8 in / 8.75 m	Engine	Prima 30 HP Diesel 2000
Builder	Nautor Swan No 96 / 116	Beam	11 ft 7 in / 3.52 m	Location	United Kingdom
Date	1977	Draft	6 ft 7 in / 2 m		
Length overall	38 ft 3 in / 11.66 m	Displacement	9.15 Tonnes		
Length deck	38 ft 3 in / 11.66 m	Construction	GRP		

These details are provisional and may be amended

Specification

BROKER'S COMMENTS

From the late 1960s Nautor Swan achieved from scratch something rather remarkable in harnessing the local traditional Finnish boat building skills to this Sparkman & Stephens design with an obsession for quality, for which their reputation now is truly justified. The most numerous design was the 38 and JACOBITE at No 96 of the total 116 built is a stunning example of these classic cruiser racers. This boat has been superbly maintained and upgraded as you would expect from such an experienced Swan owner. She is often seen out on the race track in the Solent and always fighting for the silverware. In 2011 was 3rd at the Swan Europeans and 2nd at Cowes. This is a great opportunity to purchase a truly beautiful yacht which turns heads and wins races.



• SANDEMAN YACHT COMPANY •
• Brokerage Of Classic & Vintage
Yachts •

www.sandemanyachtcompany.co.uk

SWAN 38 SLOOP 1977

Specification

CONSTRUCTION AND FINISH

- White GRP hull and superstructure
- Blue boot top
- Encapsulated lead fin keel
- Skeg hung rudder with wheel steering
- Preventative osmosis treatment (2004)
- Last ashore antifoul - July 2012
- Teak laid deck (replaced 2001)

Specification

ACCOMMODATION AND DOMESTIC EQUIPMENT

Summary

Access via sliding hatch in coach roof and companionway steps down over engine compartment

- Varnished teak interior finish
- Contrasting white décor deck head and white upholstery
- Sleeps 8 / 9 in 3 cabins
- Berths fitted with lee boards & or cloths
- Half bulkheads separate aft accommodation, charts and galley from saloon fwd

Saloon

- Full standing headroom
- 2 x Settee berths
- 2 x Pilot berths outboard
- 2 x Sets of cushions; one racing (2011) and one cruising
- Drop leaf dining table on centreline with lifting boards to stowage under
- Teak cabin sole
- Eberspacher cabin heating

Doorway in bulkhead and corridor forward

- Heads compartment to port with Blake WC, hand basin & shower doubles as basin tap
- Hanging lockers opposite heads; one wet and one dry
- Forecabin with two pipe cots in fore cabin with sail stowage beneath

Coming aft through saloon

- Galley to left on starboard
- Gas cooker with grill
- Icebox with cooler plate
- Stainless steel sink
- Storage cupboards & lockers
- Window aft to aft cabin stbd side

Access to aft cabin to right of companionway port side

- Single berth to port
- Double berth to starboard
- Forward facing chart table with chart stowage under and drawers wet locker abaft

Specification

RIG SPARS AND SAILS

Sloop rig

- Z Spars two spreader keel stepped alloy mast & boom 2011
- Navtec rod rigging 2011
- Navtec hydraulic backstay ram 2011
- Tuff luff headfoil
- Furlex roller furling headstay
- Whisker pole
- Carbon spinnaker pole 2010
- Inner forestay
- One set check stays - not currently fitted
- Most deck gear replaced / uprated 2011
- Full spinnaker gear including tack line for asymmetric sail

Sails - all North Sails unless otherwise detailed

- 3DL 680 Aramid mainsail 2011

- 3DL 680 Aramid MH #1 genoa 2011
- 3DL 680 Aramid LM #1 genoa 2011
- 3DL 680 Aramid #3 battened 2011
- #4 battened 2005 - unused
- Storm jib 2005 adapted for tuffluff in 2011
- S2 0.6oz symmetric spinnaker 2011
- S4 0.09oz symmetric spinnaker 2011
- A3 1.5oz Asymmetric spinnaker 2012
- Large Spinnaker another maker 2009
- Cruising main full battened another maker
- Elvstrom #1
- Bulletproof spinnaker
- Trysail another maker
- UK Sails furling genoa
- Spinnaker snuffer

Specification

DECK EQUIPMENT AND GROUND TACKLE

- CQR anchor with chain, approx 30 m anchor chain
- 2 x Lewmar halyard winches

- Kedge anchor & warp
- Stainless steel bow roller with double foresail tack attachments
- 3 x Dorade boxes and stainless steel grab bars
- Stainless steel pushpit, pulpit, stanchions and guard wires, spare stanchion
- 2 x Harken primary winches (fitted 2011)
- 2 x Lewmar self tailing spinnaker winches
- Winch handles
- Bathing ladder
- Cockpit table
- Hosepipe
- Gear linkage cables
- Sprayhood
- Sun awning
- Mainsail cover, compass cover, wheel cover
- Winter cover 2005
- Cockpit cushions
- Box lockers
- Mooring hook
- Carbon fibre burgee staff
- Set of check stays

Specification

MECHANICAL, ELECTRICAL AND TANKAGE

- Prima 30 HP Diesel engine 2000 last service 2011
- New gear box 2011
- Shaft drive to two blade feathering Maxprop 2011
- Three blade spare prop
- Approx. cruising speed 6 knots
- Approx. max speed 7 knots
- 1 x 80 Ah engine battery 2008
- 2 x Victron 120 Ah gel service batteries 2008
- Charged by engine alternator
- Phoenix pure sine inverter
- Manual fresh water pump
- Electric fresh water pump
- Pressurised hot and cold water
- 1 x Stainless steel 114 litre / 30 gallon fuel tank
- 1 x 204 litre / 53 gallon fresh water tank

Specification

NAVIGATION COMMUNICATIONS AND ELECTRONICS

- Danforth Constellation compass
- Raymarine ST60+ speed 2008
- Raymarine ST60+ graphic display 2008
- Raymarine ST60+ wind display 2008
- Raymarine ST60 depth 2008
- New transducer 2011
- 2 x Tacktick wireless repeaters 2009
- Raymarine C120 chart plotter 2009
- Icom IC-M421 DSC VHF 2005
- Raymarine type1 drive for autopilot with 6002 control (currently removed)
- Laptop with Seatrack racing programme 2011
- Panasonic CF-08 Toughbook wireless repeater
- Clock and barometer in saloon

Specification

SAFETY

- Fire extinguishers (expiry date unknown)
- Flare pack expiry 2013
- Life jackets
- Waterproof searchlight
- Gas detector with two sensors 2008
- 1 x Electric bilge pump
- 2 x Manual bilge pumps
- Dan buoy
- Life buoy with light
- Drogue

Disclaimer

These particulars have been prepared from information provided by the vendors and are intended as a general guide. The purchaser should confirm details of concern to them by survey or engineers inspection. The purchaser should also ensure that the purchase contract properly reflects their concerns and specifies details on which they wish to rely.

SWAN 38 SLOOP 1977

Specification
GALLERY





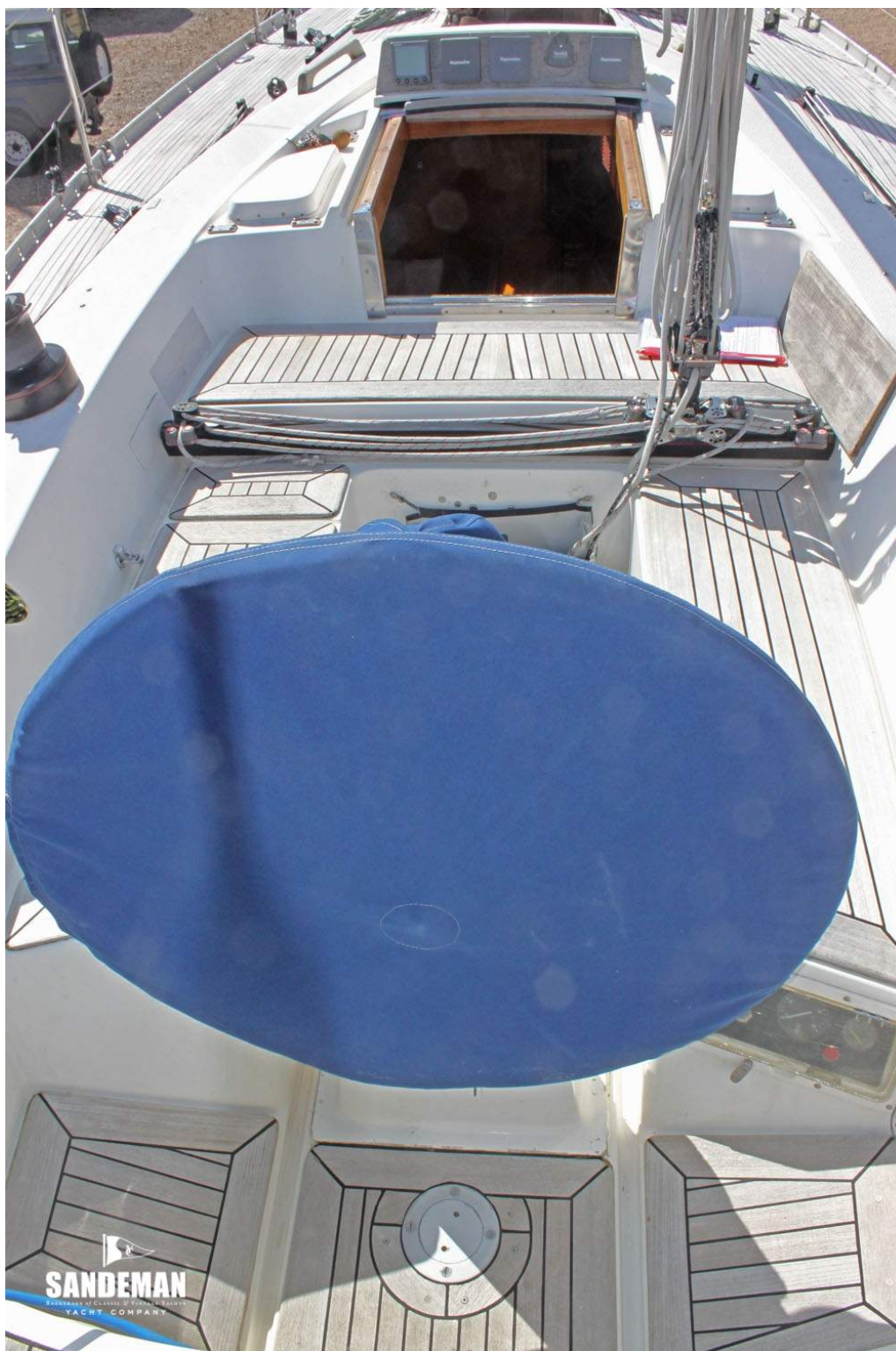













SANDEMAN
BASEBUILT BY CLASSIC & VINTAGE BOATWORK
YACHT COMPANY







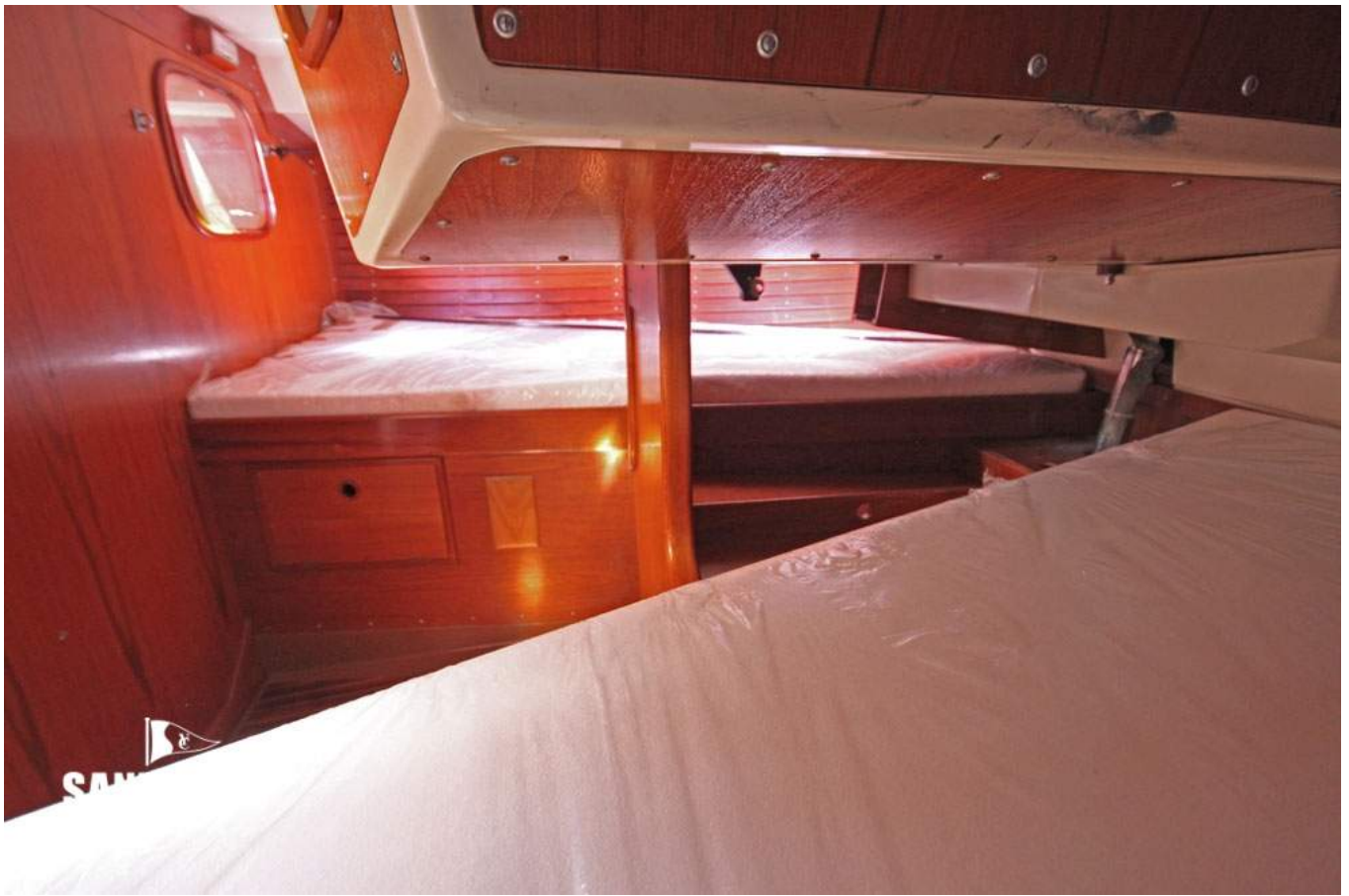



SANDEMAN
DEALER OF CLASSIC & VINTAGE YACHTS
YACHT COMPANY



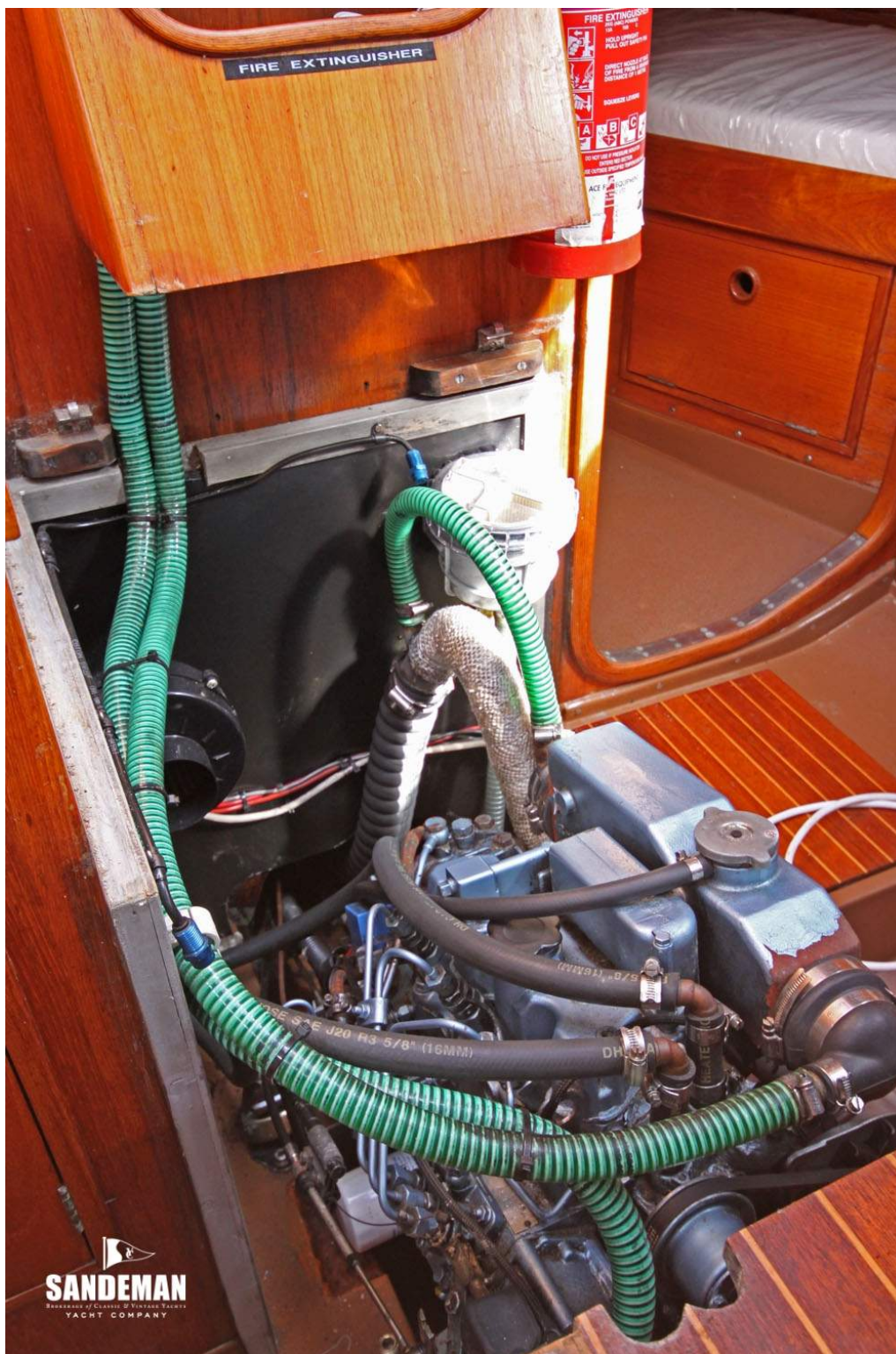

SANDEMAN
DEALER OF CLASSIC & VINTAGE YACHTS
YACHT COMPANY








SANDEMAN
HANDMADE OF CLASSIC & MODERN YACHTS
YACHT COMPANY




SANDEMAN
BOATWORKS OF CLASSIC & VINTAGE YACHTS
YACHT COMPANY

